

GLACIER COLLECTION



COMING SOON
COMING SOON
2021
COMING SOON
COMING SOON

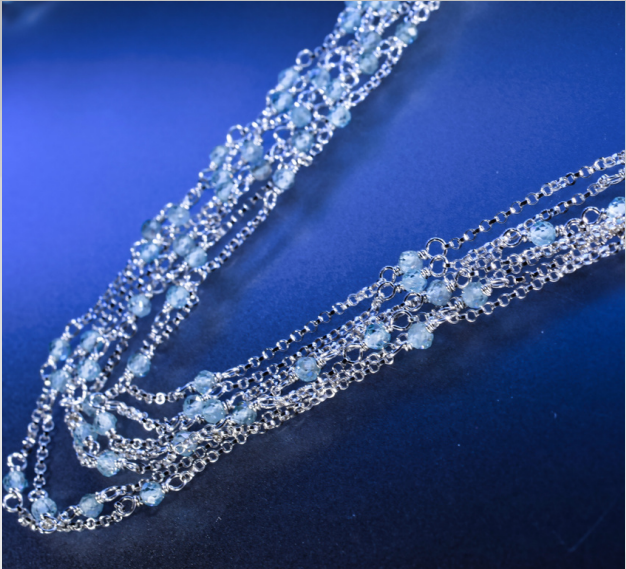


GLACIER COLLECTION

Your story is rich with history including tales from the heart that hold secrets to your resilience.

The Glacier collection is a celebration of all the significant moments that you carry with you and the small memories of time's passage as it persists forward.

Honor your journey with rare collectible pieces that reflect your own unique nature.



1

Long Opera Length Multi Silver Chain Necklace with Aquamarine and Zircon

FLUID CHAINS

2

Aquamarine and Zircon Long Stiletto Multi-Chain Drop Earrings



3

Multi Silver Chain Shoulder Dusting Statement Earrings with Zircon



GLACIER COLLECTION

BY ANDREA LI

This sleek necklace is everything you could want from a signature piece of jewelry to add that personal touch to any outfit in your wardrobe. Featuring three sterling silver cast and hand-finished boats that nestle clusters of sparkling Herkimer diamonds. A large uniquely faceted crystal quartz hangs suspended, giving a modern finish to this long statement necklace.



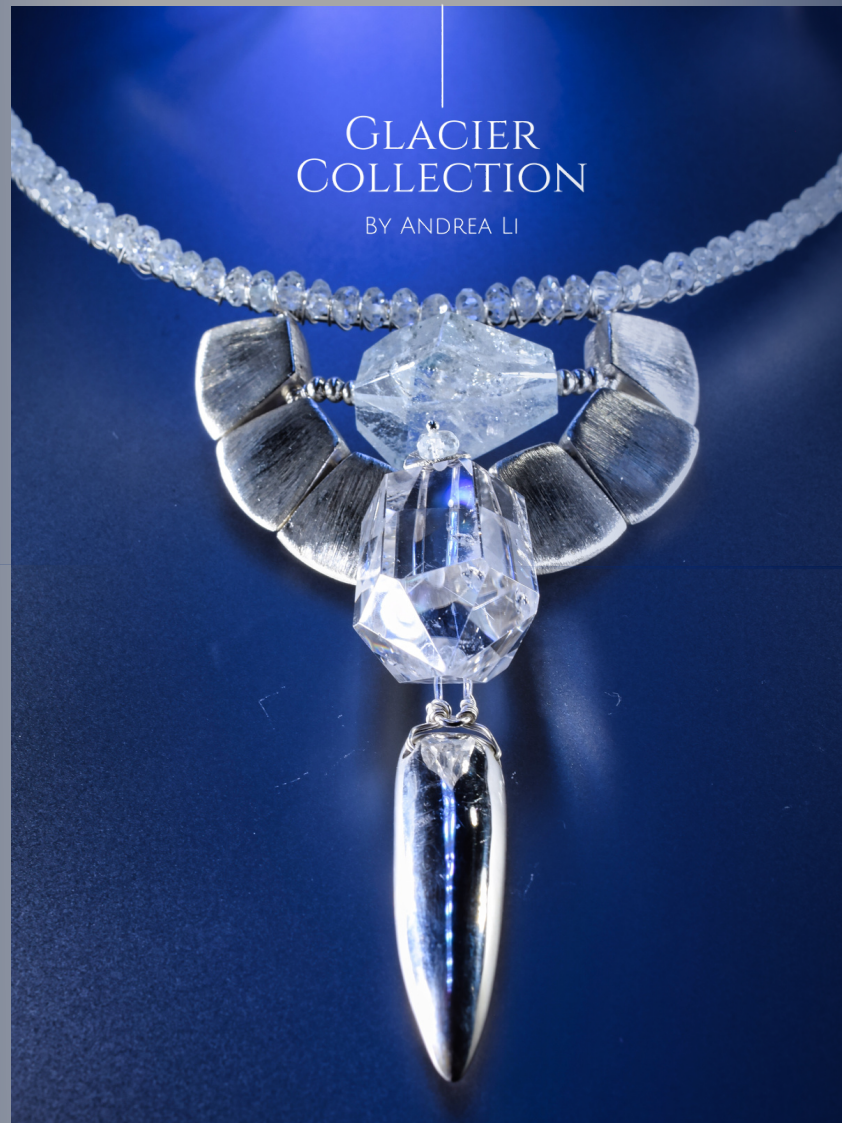
A stunning statement cuff that's both dangerous and beautiful. Custom cast solid sterling silver talons are the main feature with their moon-like gleam. A square-cut natural, untreated rare blue aquamarine sits center, nestled between two symmetrically designed gemstone clusters with lustrous pearls and sterling accents.



A fiercely modern choker featuring a large crystal sharply finished with a cast sterling silver talon pendant.

Each side is flanked by brush-textured sterling silver scale bead accents with a large simple cut aquamarine nested front and center.

All elements suspended from a hand-fabricated sterling silver choker with hand-edged aquamarine rondelles.



GLACIER COLLECTION

BY ANDREA LI



1

Sterling Silver
Large
Aquamarine
Nugget Circle
Link Bracelet

INNER CIRCLE

2



Triple Hoop
Aquamarine
Statement
Earrings



3

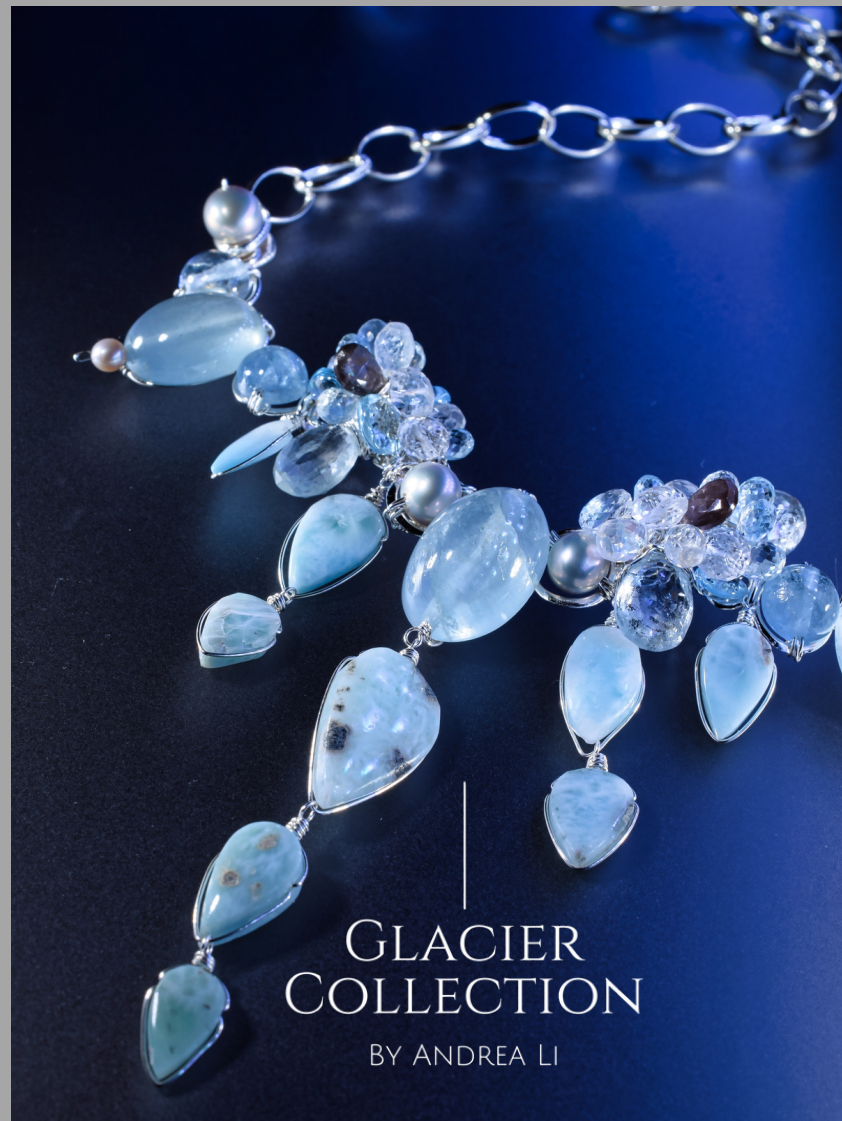
Blue Zircon and
Labradorite
Sterling Silver
Wrap Bracelet



Jewelry with enough opulence fit for a queen with an air of approachable luxury.

Perfect for making a statement in social settings that matter most.

Teardrop-shaped Larimer gracefully cascades from glittering gemstone clusters of moss aquamarine, AAA gem-quality Swiss blue topaz, white topaz, rainbow moonstone, blue aquamarine, and Cat's eye.



GLACIER
COLLECTION

BY ANDREA LI

GLACIER COLLECTION

BY ANDREA LI



This statement cuff gorgeously embodies the glamour of Art Deco styling. Architectural elements resonate throughout with textured sterling silver scales that run along the diameter of the bracelet. A large rare blue aquamarine smooth cabochon bead sits nestled in the center, flanked by two gemstone clusters and lustrous pearls.

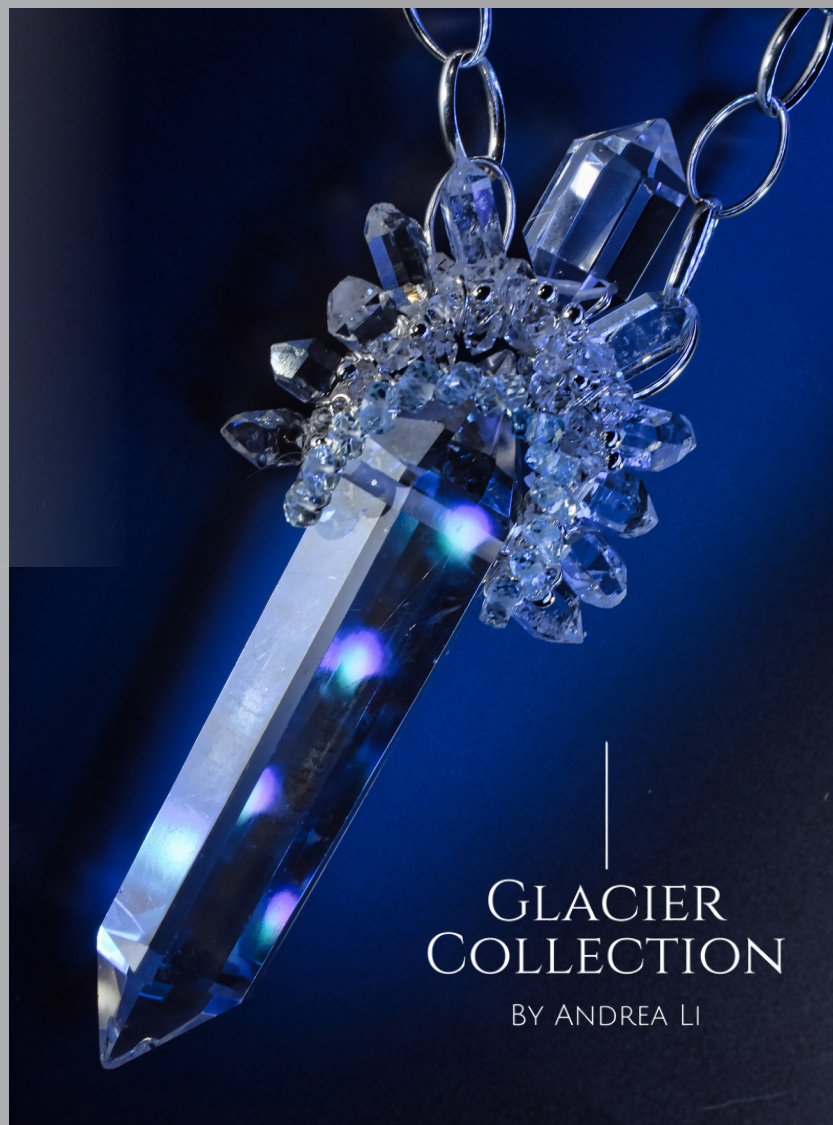


This large power crystal necklace is sure to add a megala-layer of mythology to your signature look.

A graduating halo of sparkling Herkimer Diamonds resolves to a single rock crystal point.

Small aquamarine rondelles edge the halo in an ombre color pattern.

Large shiny sterling silver oval links finish the necklace.



GLACIER
COLLECTION

BY ANDREA LI



Beautifully brushed sterling silver scales edge the entire length of this statement cuff resolving in a powerful gemstone cluster feature.

Sharp points of crystal clear hydro quartz anchor a glittering starburst pattern of marquis cut copper aquamarine and large aquamarine briolettes.

Blue zircons encircle a rare blue smooth cabochon aquamarine bead nestled in the center.



GLACIER COLLECTION

Andreali

The Baroque elegance of this statement necklace is sure to add the perfect amount of panache to your look. Watery aquamarines are featured throughout encased by layers of sparkling Herkimer Diamonds and pale blue zircons. Large crystal quartz points anchor these decorative clusters and give an aesthetically pleasing graduated dynamic to the design.

HOW TO SHOP



01

GET ON THE LIST

These collections are limited with no guarantees of availability once the collection goes live. Stay informed ahead of the public by becoming an insider.

02

SHOP EARLY

Insiders will have the opportunity to shop early before the collection officially goes live. These updates are released to insiders only.

03

CONTACT ME

Let me personalize your shopping experience by hopping on a Zoom call to answer any questions or give you more information, such as how the pieces fit.



BOOK A CALL



GLACIER
COLLECTION

BY ANDREA LI

This collection embodies not the mythology of creativity that often shrouds an artistic vision but rather the commitment to the process that enables such visions to arise in the first place. This collection is dedicated to that process and the commitment that makes it all possible. Like a glacier, it endures as a gatekeeper to all that came before to honor what happens next.

xoxo Andrea

