

F / W 2022



DESERT POWER

Andrea Li

ANDREA LI

F / W

COLLECTION

2022

LOOK BOOK • LOOK BOOK • LOOK BOOK • LOOK BOOK • LOOK BOOK

ANDREA LI

F / W

COLLECTION

2022

DESERT POWER

The Brand

Each unique piece completes a story that nature started. Gems and metals formed deep in the womb of the earth arise out of darkness to be reimagined into artful objects that can awaken the soul. Their story continues with you. A shared lineage that began centuries ago.

I create jewelry to be worn and adored so you can escape the mundane



Andrea Li

22



THE

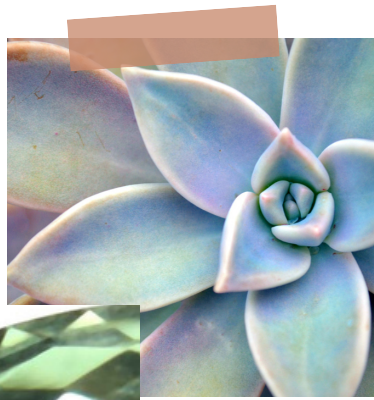
COLLECTION

Features the watery hues of aquamarines, green amethyst, and prehnite. Designed to imbue your life's journey with unshakable confidence. Tiny terrarium-like centerpieces to spark your imagination. Playful pieces of original, one-of-a-kind art to add a dash of whimsy to your style and initiate conversations.

In the Mood

The strength of life in the desert and the rare bounty the earth provides is the source of inspiration.

*Desert
Obsession*



Clean lines & layers

*Classic without
being ordinary*



1 | SAHARA

Drop Earrings.

2 | MOJAVE

Double Layered Necklace.





DESERT POWER

Savannah | Kalahari



ART &

3 | Savannah Necklace | Lodalite & hand-fabricated
14k gold filled 4 | Kalahari Earrings | Lodalite & hand-
fabricated 14k gold filled



SOUL

Shine for me

5 | NEGEV

24 gilded Druzy, green amethyst, chalcedony, prehnite, aquamarine, sapphires, garnet in 14k gold filled.

6 | DUNE

24 gilded Druzy, green amethyst, zircon, chalcedony, prehnite, aquamarine, sapphires, garnet in 14k gold filled.

This collection features Lodolite, Green
Rutilated, Aquamarine, topaz & 14k goldfilled

Artful Objects

**BOLD DESIGN
ONLY FOR THE
FEARLESS**



DESERT POWER

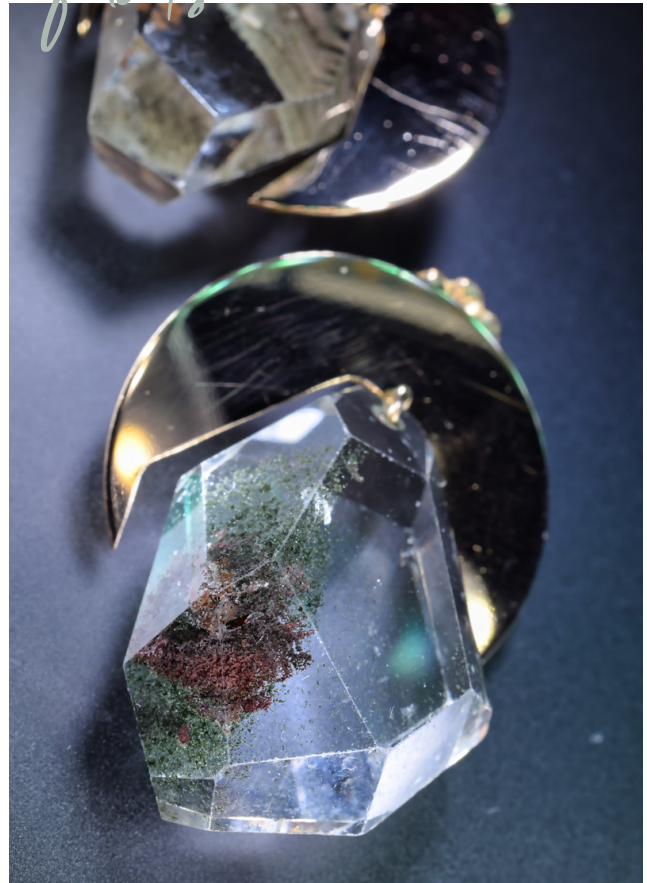
MODERN CHIC

*Architectural
facets*



| XEROPHYTE

Watch them, watching you.



| KAVIR

Compliment attractors.

Contemporary
ELEGANCE



EXPRESSIVE STYE

| SINAI



| SEDONA



| SONORAH

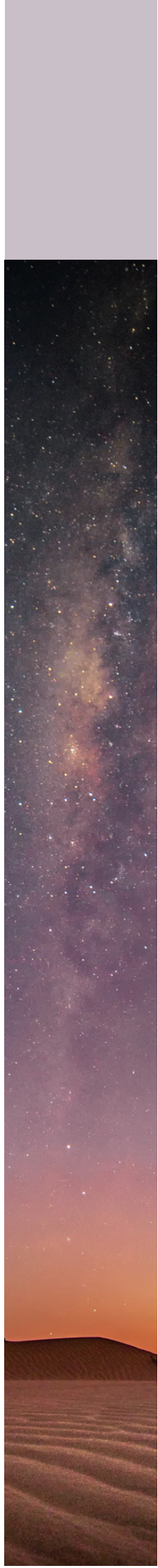


This line features aquamarines, green rutilated, green amethyst, with hand-fabricated 14k gold-filled chains & gilded elements



7 | SONORAH

A versatile wrap bracelet to style in a variety of ways.





8 | GILA

hand-fabricated 14k gold-filled arches with green tourmaline, whisky topaz, cat's eye & pearls

All-Around

POWER LOOK



*The sidewalk is
your runway*

1 | GOBI 2 | ATACAMA 3 | NAMIB



9 | COACHELLA

Rutilated quartz, sunstone, sapphires, green amethyst, zircon, garnet, aquamarine, cat's eye in 24k gold vermeil

10 | INDIO

Rutilated quartz, sunstone, sapphires, green amethyst, zircon, garnet, aquamarine, cat's eye in 24k gold vermeil

The mystery of time encapsulated within the golden strands of
minerals frozen as a reminder of its passage



*Dust off the dull of
life with adornment*





GOLD



| SANDSTORM

24k over sterling silver with
green amethyst, zircon &
Green gold topaz



11 | SALTON

Glowing gems and gilded details to
elevate everyday



POWERFUL FEMININITY



DESERT POWER

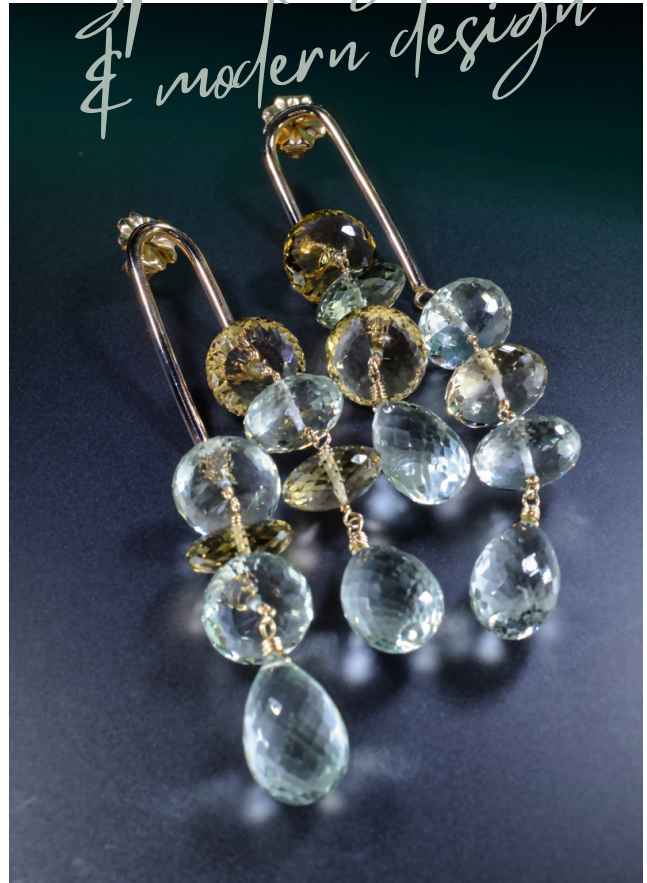
CHIC POWER

*Sparkling gems
& modern design*



| NOBIA

Designed to amplify your style.



| GIBSON

Just add a worthy occasion.

Modern MOBILES





12 | HAMADA

Lodalite, moss aquamarine, green rutilated
in 14k hand-fabricated gold filled

13 | TAKLIMAKAN

Lodalite, moss aquamarine, green rutilated
in 14k hand-fabricated gold filled

Golden gilded frames meant to give a proper stage to earth's
masterpieces of imaginative creations

MINIMALISM

Simple Luxuries

GEMSTONES
AND PAPER CLIP
CHAINS



DESERT POWER

MINIMAL LUXE

*Elevate your
everyday*



| ALBEDO

Unassuming elegance.



| TENGER

Simple but better.

THE BEST KEPT SECRET



DESERT

POWER



14 | EUPHORBIA

Lodalite, green rutilated, green amethyst, moss aquamarine, zircon, garnet, moonstone, sapphire, cat's eye, pearl in 14k gold filled.

15 | MARICOPA

Lodalite, green rutilated, green amethyst, moss aquamarine, zircon, garnet, moonstone, sapphire, cat's eye, pearl in 14k gold filled.

Like a desert flower that continues to bloom with a strength the
desolation must respect and allow to persist

LUXE LAYERS

- CHAINS AND ADD-ONS



Lucious additions to my double-layered necklaces for the perfect statement stack. Easily level up your look like a pro stylist.

ANDREA LI

ANDREA
LI

www.andreali.com